

Fulcro have a unique perspective of the Design and Construction industry, underpinned by digital technologies. We are an innovative and collaborative team that possess a unique set of skills honed through our 16+ years of experience, across all operational, organisational and delivery aspects of a project.



*Battersea Power Station;
London*



*Wimbledon Court One;
London*



*B2 Pacific Park ;
New York*

Job Description:

Position	Project Manager
Location:	Wixford or central London
Contract type:	Permanent, full time
Salary:	Compensation commensurate with experience, skills and ability
Division:	Coordinated Design Services [CDS]

ABOUT US

An exciting opportunity has arisen to join well established and rapidly growing business!

Fulcro is an innovative team of **Design Technologists, Engineers** and **Creative Thinkers** who thrive on **delivering solutions** that are **faster, better** and have **more value** for our clients.

Our core activities are:

- Project Management
- 3D/4D and 5D digital prototyping
- BIM Management
- 3D design detailing for construction, fabrication and assembly

Fulcro work on the **UK's and World's largest construction projects** including Stadia, Iconic residential developments, flagship commercial buildings and Infrastructure projects.

Our people are important to us. We empower them to perform, offer opportunities to grow and **reward** their contribution. We will develop your knowledge through practical applications and teach you about relevant technologies.

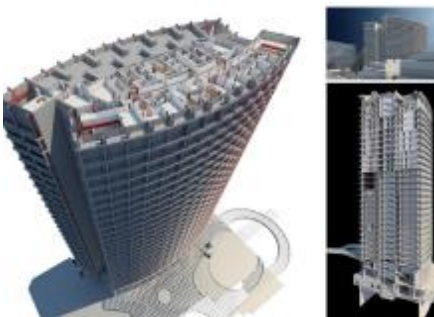
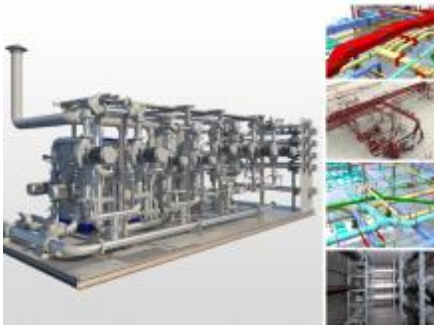
SCOPE OF THE ROLE

Within Coordinated Design Services [CDS] division you will be **implementing BIM technology**. You will:

- Assist in ensuring the BEP is followed
- Audit of models and chairing
- Minuting co-ordination meeting

This position will give you the chance to work on some of **the top construction projects** and includes travelling to sites on multiple projects in the UK and Worldwide!

This role leads to a possibility to **become a Team Leader** on significant infrastructure projects.



KEY FUNCTIONS

- Lead a team delivering high quality service
- Manage Project Commercials
- Create and implement new process that drive efficiencies in project delivery
- Train and Support the team in the delivering the project requirements
- Implement and Document BIM Standards
- Work with Project teams to ensure the successful delivery of the project
- Review and Analyse 3D Models from consultants and contractors
- Conduct clash detection and visual walkthroughs using NavisWorks Manage
- Audit and review models in Autodesk Revit
- Report Writing
- Hold weekly coordination meetings with project team members
- Early design review and constructability analysis
- Manage / Update Project Documents
- 3D Model Quantity Extraction / Verification
- 4D Scheduling / Simulation
- Model Authoring

PERSON'S SPECIFICATION:

The key is **attitude** and aptitude! You need to have

- Strong interpersonal and communication skills
- Technical problem-solving abilities
- Leadership skills
- Passion and enjoy working within a fast-paced innovative environment

QUALIFICATIONS

Essential

- Interest in working with Construction Technology
- Advanced knowledge of BIM processes, standards and protocols
- Knowledge in Autodesk Revit, NavisWorks & AutoCAD
- Knowledge of construction processes and procedures
- Advanced PC skills, specifically Microsoft Windows Applications (Word, Excel, Outlook & PowerPoint)

Desired

- Site / Construction Experience
- Trade background: Electrician, Plumber, Fitter etc.
- GCSE Grade A-C (4+) in Maths and English
- Experience with Primavera P6
- Completed coursework in Construction, Architecture or an equivalent combination of training and or work experience.

To apply please email: recruitment@fulcro.co.uk

For EU roles, candidates must be eligible to work and live in the European Union.

Proof of eligibility will be required with your application.