

Fulcro have a unique perspective of the Design and Construction industry, underpinned by digital technologies. We are an innovative and collaborative team that possess a unique set of skills honed through our 16+ years of experience, across all operational, organisational and delivery aspects of a project.



*Battersea Power Station;
London*



*Wimbledon Court One;
London*



Role Profile:

Position	Multidisciplinary BIM Technologist
Location:	Wixford (Stratford-upon-Avon) or Central London (Blackfriars)
Contract type:	Permanent, full time
Salary:	Compensation commensurate with experience, skills and ability
Division:	Coordinated Design Services [CDS]

ABOUT US

An exciting opportunity has arisen to join well established and rapidly growing business!

Fulcro is an innovative team of **Design Technologists, Engineers and Creative Thinkers** who thrive on **delivering solutions** that are **faster, better** and have **more value** for our clients.

Our core activities are:

- Project Management
- 3D/4D and 5D digital prototyping
- BIM Management
- 3D design detailing for construction, fabrication and assembly

Fulcro work on the **UK's and World's largest construction projects** including Stadia, Iconic residential developments, flagship commercial buildings and Infrastructure projects.

Our people are important to us. We empower them to perform, offer opportunities to grow and **reward** their contribution. We will develop your knowledge through practical applications and teach you about relevant technologies.

SCOPE OF THE ROLE

Within Coordinated Design Services [CDS] Division you will be taking ownership of the validation and verification of building design using 3D tech systems and processes.

This position will give you the chance to work on some of **the top construction projects** and includes travelling to sites on multiple projects in the UK and Worldwide!

This role enables a career pathway to **Project Manager** working on significant infrastructure projects.



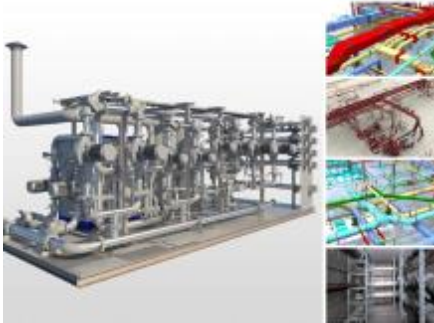
KEY FUNCTIONS

- Work with Project teams to ensure the successful delivery of the project
- Review and Analyse 3D Models from consultants and contractors
- Conduct clash detection and visual walkthroughs using NavisWorks Manage
- Audit and review models in Autodesk Revit
- Report Writing
- Hold weekly coordination meetings with project team members
- Early design review and constructability analysis
- Comment on Project Documents

PERSON'S SPECIFICATION:

The key is **attitude** and aptitude! You need to have

- Strong interpersonal and communication skills
- Technical problem-solving abilities
- Leadership skills
- Passion and enjoy working within a fast-paced innovative environment



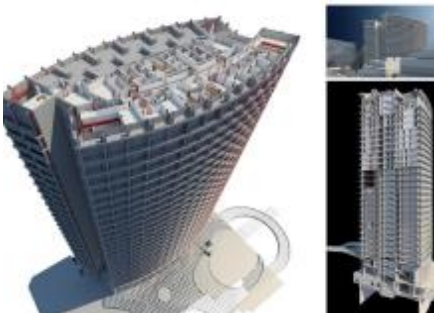
QUALIFICATIONS

Essential

- **Keen interest in building design**
- **Understanding of Architecture and Structure**
- Advanced knowledge of BIM processes, standards and protocols
- Knowledge in Autodesk Revit, NavisWorks & AutoCAD
- Knowledge of construction processes and procedures
- Advanced PC skills, specifically Microsoft Windows Applications (Word, Excel, Outlook & PowerPoint)

Desired

- Understanding of Building Services (MEP)
- Site / Construction Experience
- Trade background: Electrician, Plumber, Fitter etc.
- GCSE Grade A-C (4+) in Maths and English
- Experience with Primavera P6
- Completed coursework in Construction, Architecture or an equivalent combination of training and or work experience.



To apply please email: recruitment@fulcro.co.uk

For EU roles, candidates must be eligible to work and live in the European Union.

Proof of eligibility will be required with your application.